



- Keyway transmission and frictionally engaged connection can prevent or reduce reverse backlash. Surface pressure of the feather key connection is reduced.
- Coupling can be installed and removed without moving the driving and driven equipment.
- The dynamic balance is only for one side of hub, Grade G6.3. For the grade G2.5, please specify in the order.
- Torsionally flexible, maintenance-free.
- Light mass, small moment of inertia.
- Damping impact and vibration.
- Axial plug-in, fail-safety.
- Maximum torque of elastomer is twice of the rated torque.
- Mounting instructions at 03.105.

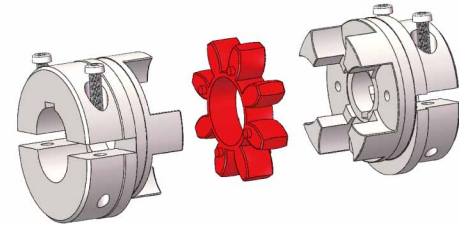
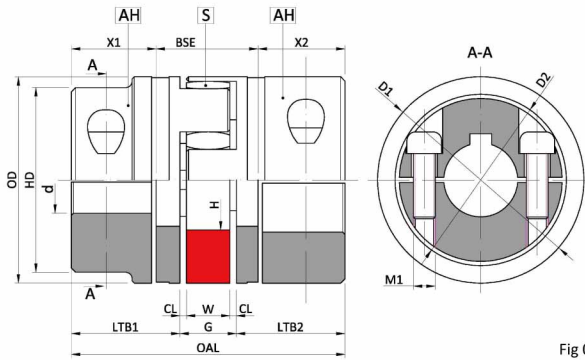


Fig 03.49

Size	Spider Rated Torque N.m			Dimensions mm										CHS			
	92ShA	98ShA	64ShD	d _{max}	LTB1·LTB2	G	CL	W	OD	HD	D1	D2	OAL	X1,X2	BSE	M1xL1	T _A
-	92ShA	98ShA	64ShD	d _{max}	LTB1·LTB2	G	CL	W	OD	HD	D1	D2	OAL	X1,X2	BSE	M1xL1	T _A
19	10	17	21	20	25	16	2.0	12	40	-	46.0	-	66	16.0	31	M6x16	14
24	35	60	75	28	30	18	2.0	14	55	-	57.5	-	78	21.0	33	M6x20	14
28	95	160	200	38	35	20	2.5	15	65	-	73.0	-	90	23.5	39	M8x25	35
38	190	325	405	45	45	24	3.0	18	80	-	83.5	-	114	33.5	43	M8x30	35
42	265	450	560	50	50	26	3.0	20	95	85	-	93.5	126	36.5	48	M10x30	69
42	265	450	560	55	50	26	3.0	20	95	-	97.0	-	126	36.5	48	M10x35	69
48	310	525	655	55	56	28	3.5	21	105	95	-	105.0	140	42.5	50	M12x35	120
48	310	525	655	60	56	28	3.5	21	105	-	108.5	-	140	42.5	50	M12x40	120
55	410	685	825	65	65	30	4.0	22	120	110	-	119.5	160	47.5	60	M12x40	120
55	410	685	825	70	65	30	4.0	22	120	-	122.0	-	160	47.5	60	M12x45	120
65	625	940	1175	70	75	35	4.5	26	135	115	-	123.5	185	57.0	65	M12x40	120
65	625	940	1175	80	75	35	4.5	26	135	-	132.5	-	185	57.0	65	M12x45	120
75	1280	1920	2400	80	85	40	5.0	30	160	135	-	147.5	210	64.5	75	M16x50	295
75	1280	1920	2400	90	85	40	5.0	30	160	-	158.0	-	210	64.5	75	M16x50	295
90	2400	3600	4500	90	100	45	5.5	34	200	160	-	176.0	245	78.5	82	M20x60	580
90	2400	3600	4500	110	100	45	5.5	34	200	-	197.0	-	245	78.5	82	M20x60	580
100*	3300	4950	6185	110	110	50	6.0	38	225	180	-	185.5	270	84.0	102	M16x50	295
110*	4800	7200	9000	120	120	55	6.5	42	255	200	-	208.0	295	90.0	115	M20x60	580
125*	6650	10000	12500	140	140	60	7.0	46	290	230	-	242.5	340	105.0	130	M24x70	1000

- CJ19-90 hub standard material is steel #45, above 100, hub standard material is ductile iron.
- D is the bore diameter; The metric bore according to ISO fit H7. The feather keyway according to DIN6885 sheet1-JS91. The inch bore is in accordance with AGMA9002-C14 standard, the bore is clearance fit, and the keyway is commercial grade.
- The max circumferential speed is 35m/s.
- Half-length taper grooved pins are according to DIN EN ISO 8745.
- Hexagon socket set screws with cup point is accordance with DIN EN ISO4029, Strength class: 12.9. T_A is tightening torque, unit: Nm.
- ★ CJ100-125, 4 hexagon socket screws for each hub, more details, please refer to document 03.40.01.
- Data sheet of CJ-AH2 radial drop-out type, without keyway, please contact RUVJAX.
- CHS: Cylindrical head screw.