

Flexible Couplings



RUVJAX[®]
乐兆传动

RUVJAX
乐兆传动



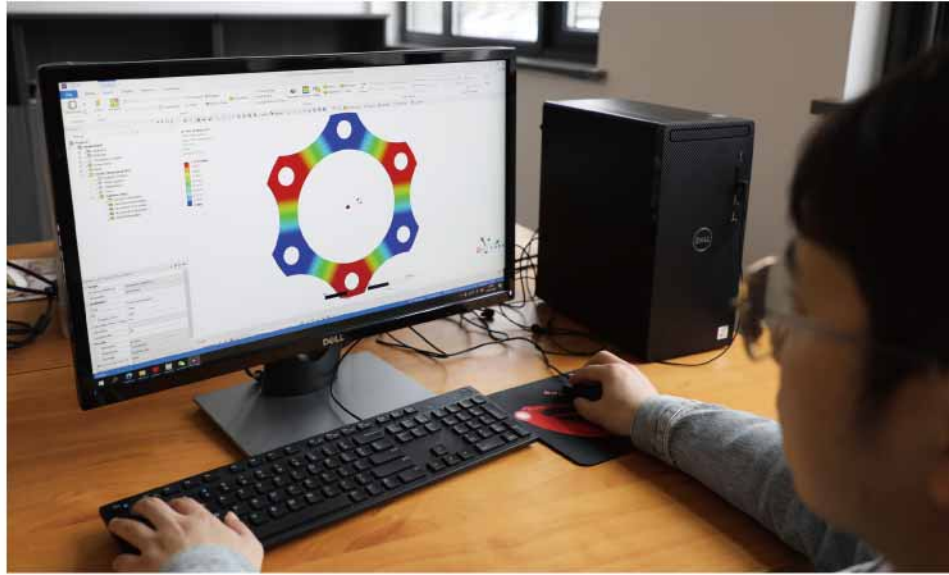
We are committed to high quality coupling research and development and manufacturing, so that your equipment always maintain normal operation. Our experience, expertise and close cooperation with internationally renowned manufacturers enable us to meet the needs and solutions of our customers.

After years of development and accumulation, continuous product optimization and innovation, our couplings have been able to meet the needs of fluid equipment, hydraulic systems, off-highway vehicles, generators, automation equipment, material handling and other industrial industries.

Perfect quality system, well-trained production and quality inspection team, so that the quality of products are strictly controlled, so that every customer 100% rest assured and no worries.



Technology & Innovation



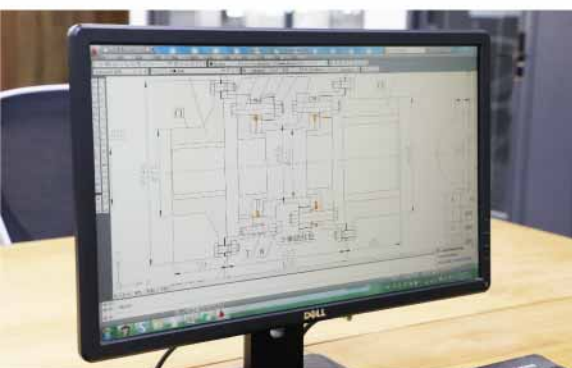
The coupling is used to connect the driving shaft and the driven shaft. It not only transmits torque, but also compensates shaft misalignment, alleviates impact, reduces vibration and adjusts the natural frequency of the shafting. At the same time, the coupling can also protect other parts of the shafting, because the coupling is the easiest to replace and has the lowest comprehensive cost.

We provide professional service in various industries for all kinds of equipment. We understand the daily problems and challenges that the unnecessary troubles or damage to the equipment due to some common base parts would cause the machines stopping and loose, which push us to improve and optimize, improve the reliability of coupling and provide optimal solutions for kinds of equipment.

We use Matlab, Ansys, Solid-Works and CAD software for auxiliary design, calculation and simulation of the performance and safety of each coupling, so that the product continues to optimize, improve performance and prolong service life.

Research and development of a new coupling is a long process to collect information of industry, familiar with relevant standards, the analysis of the application of operating mode, to establish the mathematical model, the physical calculation program, map 3 d simulation of the test bench testing, production process and quality control program files, and so on, purpose is to ensure the performance of our products, and truly meet the needs of customers.

For newly designed products, please contact RUVJAX. The delivery time would be long.



Quick Delivery

Whether you are a manufacturer or an end user, you need to get the product you need quickly so that you can get your equipment to customers quickly and get it back up and running quickly with less downtime. As a manufacturer of transmission components, we are well aware of the value of fast delivery.

No matter what kind of rotating equipment, will be a failure due to various reasons, coupling, too, will be due to improper use, product quality, service life and so on reasons cause damage, but any customers want to be able to make rapid return to normal in operation, this needs us to provide you with fast delivery service.

We have sufficient parts inventory and rapid processing capacity, perfect process so that the products can reach your factory at the fastest speed, so that your equipment can resume normal operation, reduce the loss of downtime.

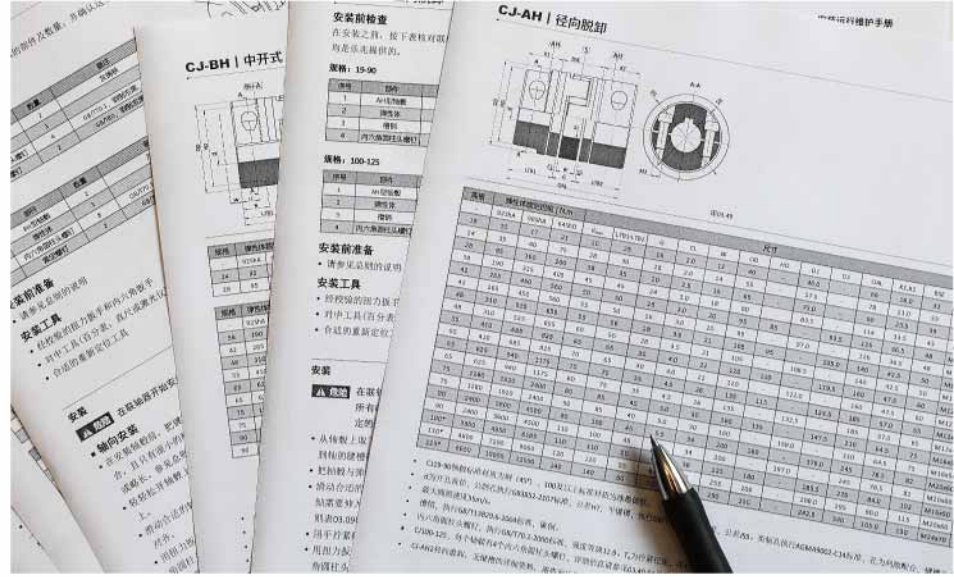


As long as you provide complete information, we can in you need time to provide you with products, the fastest is completed in the day, and whether you are need/flat cylindrical hole keyway/tight set screw, or slot connection/flat keyway/dynamic balance, or spline, whether you need to bore metric or inch, because we have a complete working procedure and process.

There are many kinds of couplings, and we are committed to the research and development of some kinds in manufacturing, but many couplings can be replaced, as long as they can meet the requirements of actual use, of course, we will also suggest a more optimized selection for you, and provide you with a quick delivery of substitutes.



Service



We are not only a coupling manufacturer, but also a service provider. We cooperate closely with all kinds of equipment manufacturers. From working condition analysis, coupling selection, coordination design, to the maintenance of equipment after being put into use, we always serve at your side.

Selection and Solution

Our experienced engineers will provide you with professional selection and optimal coupling scheme, which will start from our understanding of your equipment and operating conditions. For some equipment with periodic torsional vibration, we can also provide you with torsional vibration calculation of shafting.

2D&3D Drawing

Each of our products are available in 2D and 3D drawings, you can easily use them in your design, if your product is special size, we will also prepare 2D and 3D drawings for you at the fastest speed.

These drawings are now being uploaded to our website so that you can easily download them from the Internet for your design and drawing.

Installation instructions

We have detailed installation, operation and maintenance manuals for each series and model of products, including installation steps and precautions, to ensure the correct installation of your coupling and guide you how to carry out regular maintenance.

Training

We provide training for equipment design engineers, assembly technicians and maintenance professionals on various professional knowledge of couplings, so that you can have a deeper understanding of couplings and help you correctly choose, design, install and maintain them.

Archives

Each of our products has a detailed record of key dimensions and requirements, and these records are saved by us as archives. If the coupling you purchased from Lezhao fails due to various reasons and needs to be replaced, we can quickly help you find the archives and quickly provide you with the products that need to be replaced.

Spare parts

Full INVENTORY, fast processing, complete files, we can provide you with a variety of coupling parts, including elastomers and the whole set of coupling, reduce your downtime.

The selection of coupling is very important for its running performance and service life, so it must be paid high attention.

The better alignment, the longer service life, the degree of misalignment exceeds the specified value, will lead to coupling damage.

Design and production are the necessary conditions to ensure the quality of the coupling, but only the correct selection and installation can ensure the high performance and long service life of the coupling.

Please follow the selection method of each series of couplings. If you need help, please consult RUVJAX.



Fluid Equipment

Fluid equipment mainly includes pumps, fans, compressors, chillers, cooling towers, etc., driving machines usually have motors, diesel engines and steam turbines, etc. According to the different fluid medium and actual working conditions of the load end, some run smoothly, some have impact, and some have periodic alternating load; Some are operated at conventional speeds, such as 1500rpm and 3000rpm, some are driven by speed reducers at very low speeds, and some are driven directly by high-speed steam turbines or by speed accelerators. How to choose the coupling reasonably and correctly, we need to integrate the above factors and the characteristics of the driving machine/driven machine, to carry out the selection of coupling.

There are many kinds of fluid equipment, large quantity and wide distribution. How to improve the reliability of equipment, reduce the cost of maintenance of equipment enterprises and reduce the loss of downtime is our goal all the time. We look forward to working with manufacturers of pumps, fans, air compressors, refrigerators and other fluid equipment to provide optimal transmission solutions. We also look forward to working with distributors of various fluid equipment to provide spare parts in the fastest way.



Full range of high performance couplings

Meet all fluid equipment requirements

Whether your fluid equipment is driven by electric motor, diesel engine or steam turbine, no matter what industry your equipment is used in, we can provide you with reliable and cost-effective solutions.

When the driving machine is a motor, the load end runs smoothly, such as clean water pump, centrifugal fan, screw compressor, etc., it is recommended to choose CJ series curved jaw coupling; The load end is not stable, there is a small amount of impact, such as gear pump, CAM rotor pump, etc., then can choose L series jaw coupling, the rubber elastomer has better buffering vibration reduction performance. If there is a large impact at the load end, such as mud pump, pulp pump, plunger pump, etc., the S-Flex series toothed ring coupling can be used. The shear rubber provides better damping and smaller torsional stiffness.

When the driver is a diesel engine, such as diesel engine pump, diesel engine driven mobile air compressor, etc., can choose the RM series high elastic coupling, by adjusting the shafting natural frequency, make the equipment run above higher than the natural frequency and thus avoid torsional resonance, effectively ease the shock and reduce the vibration at the same time, extending the service life of the equipment.



Pump, fan and centrifugal compressor used in petrochemical industry can choose disc coupling, infinite life, zero maintenance characteristics, can let you forget the installation, 100% no maintenance worries. The GL series is an economical option. Of course, we can also improve disc couplings to meet API610(ISO13709), or API671 (ISO10441) standards for you upon request.



If your equipment is in a very harsh environment, wet and dust, such as mines, bulk cargo terminals, building materials factories, then you can choose H series snake spring coupling, a fully enclosed metal coupling, grease lubrication, and has a very good damping function. In this way, the performance of non-metallic elastomers such as polyurethane can be prevented from deteriorating in the humid and hot environment, and the rubber and stainless steel disc can be prevented from wearing out in the dust environment, ensuring the reliable operation of the equipment for a long time.



If it is emergency equipment, such as fan, emergency fire pump, fire smoke exhaust, cooling water pump, etc., should choose coupling with failure safety functions, such as the CJ series jaw coupling, if choose the RM series high elastic coupling, should consider to matching failure safety device, so that under the case of elastomer can emergency operation for a period of time.

Hydraulic System

Hydraulic system is widely applied in various industries and various kinds of large and medium-sized equipment, such as injection molding machinery, rubber machinery, forging machinery, mining machinery, port machinery, metallurgical machinery, lifting machinery, woodworking machinery, such as the hydraulic system, electric motor and hydraulic pump, hydraulic motor and the feature of coupling usually use nylon sleeve type drum gear coupling, It is an elastomer free TORsional rigid coupling, shear type, providing axial, angular, and radial compensation, but with virtually no damping capacity.

We have developed CJ-E series flexure couplings for hydraulic systems, which is a supplement to the standard CJ couplings. It perfectly reflects the advantages of the flexure couplings and also has better economy.



Cost-effective transmission solutions

Elastomer coupling

CJ-E series curved jaw coupling, specially designed for hydraulic system, compression type, compared with nylon sleeve drum type tooth coupling, can provide more torque, and can effectively alleviate the impact and reduce vibration, while providing axial, angular and radial compensation, with a very high cost performance ratio, is the ideal choice for hydraulic system transmission.

CJ-E series couplings also have the characteristics of failure safety. When the elastomer is damaged and fails for some reason, the design of cross jaw can also make the coupling continue to run, so that the hydraulic system will not stop due to the failure of the elastomer.

CJ-E series couplings have 4 kinds of elastomer hardness, which can be reasonably selected according to the working condition and torque of hydraulic pump and hydraulic motor.

CJ-E series couplings have cylindrical holes, tapered holes, spline holes and other opening methods to meet the output shaft of various types of hydraulic pumps and hydraulic motors. Spline holes have GB, ISO, DIN, ANSI, JIS and other standards.

CJ-E series couplings range from 38 to 90, with maximum torque up to 4500Nm and maximum opening up to 90mm. CJ series standard couplings are available for smaller and larger sizes.



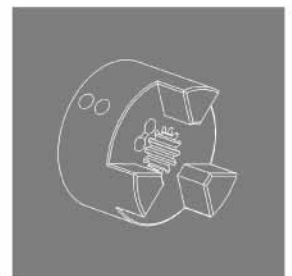
L series straight jaw coupling can also be used, nitrile rubber elastomer to make it has better buffering and vibration reduction ability, especially suitable for small hydraulic system, while winding elastomer can be replaced without moving the motor and hydraulic pump, shorten the downtime, reduce the maintenance cost of hydraulic system.



R-LOC Spline

The R-LOC is a very simple but effective design consisting of a unique "dog bone" type groove that is placed slightly above and parallel to the spline hole. Set screws are mounted vertically in this slot. The spline shaft is "wrapped" around the entire inner spline profile under clamping force.

- Easy & Quick Installation and Disassembly
- Reduce the stress of equipment components
- Improve the connection efficiency between shaft and hub
- Avoid premature spline shaft repair and replacement
- Reduce noise associated with couplings



Off-Highway Vehicles

Off-Highway Vehicles include construction machinery, agricultural machinery, mining machinery, forestry machinery, etc., most of which are chassis engines to drive hydraulic pumps, and then by the hydraulic system to achieve various functions.

Due to some characteristics of diesel engine and hydraulic pump can not be changed, such as the moment of inertia, and the whole shafting is basically rigid, then the simplest way is to adjust the natural frequency of shafting by coupling, and determine the natural frequency of shafting is mainly the dynamic torsional stiffness and moment of inertia of the coupling.



Adjusting the shaft natural frequency to make sure that the shaft run under the natural frequency.

Because the moment of inertia of the hydraulic pump is usually small, it usually adopts torsional rigid coupling to make the natural frequency of the shafting in the normal operation area, so as to avoid the torsional resonance of the shafting, and play the role of buffering, damping and compensating the shaft misalignment.

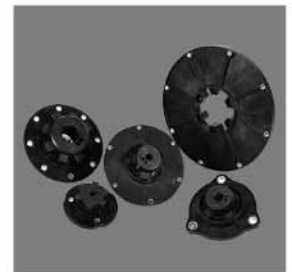
The elastomer is Hytel thermoplastic polyester material for RF-H series torsional rigid couplings, so that it is suitable for higher temperature, better wear resistance and longer service life.



RF-H series torsional rigid couplings are made of Hytel thermoplastic polyester material as elastomer, which makes them suitable for higher temperature, better wear resistance and longer service life.

RF-K Series Torsional Flexible Coupling

Designed for hydraulic pump for flanged installation, composed of flywheel disc and hub made of glass fiber reinforced nylon, torsional stiffness is large, adjust the natural frequency of shafting, so that the equipment operates below the natural frequency, so as to avoid torsional resonance.



This product is in the development process, the product supply cycle may be long, please consult RUVJAX Transmission for specific specifications.

RF-KE Series Torsional Flexible Coupling

Usually, the radial stiffness of the torsional rigid coupling is also large, so that the radial deviation will produce a large reaction force, which may lead to the damage of the coupling and the connecting shaft and bearing.



RF-KE developed a torsional rigid but radially flexible coupling on this basis. It is used in hydraulic pumps with flange installation to adjust the natural frequency of shafting so that the equipment can operate at the natural frequency and avoid torsional resonance.

We can develop couplings for diesel engine or construction machinery enterprises for a certain type of models, so that it has better adaptability and improve market competitiveness.

Gensets

Commercial generators are typically powered by diesel engines, with power ranging from tens of kW to thousands of kW. However, as an emergency device, the manufacturer and user of all generators must consider their reliability to ensure their smooth driving and normal operation during emergency conditions, while ensuring their necessary service life. In addition to the correct selection of high-quality diesel engines, generators and control systems, we must also master the various operating conditions of diesel generators, and then find the best transmission solutions.

- Diesel engine output has periodic alternating torque, how to reduce the periodic torsional vibration, improve power quality and prolong the life of the generator set.
- How to avoid damage caused by resonance of diesel generator during normal operation.
- How to ensure that the generator in the case of sudden short circuit, will not lead to coupling and diesel engine damage.



Adjusting the shaft natural frequency to make sure that the shaft run under the natural frequency.

After choosing the diesel engine and generator, its inherent characteristics are difficult to change, so the simplest way is to adjust the shaft natural frequency through the coupling, so that the generator runs on the natural frequency, and the moment of inertia of the driving end can not be too small, the running speed can not be too low

Since the operating frequency is above the natural frequency of the shafting, the generator will pass through the resonance zone when starting. Since the damping of the elastic coupling is large and the mass coefficient of the load end is small, the resonance will not be large. As long as the maximum torque of the selected coupling can exceed the resonance torque, it will be safe to start.

Similarly, since the operating frequency is higher than the natural frequency of the shafting, the power amplification coefficient will be very small (less than 1), so the periodic alternating torque of the diesel engine will be greatly reduced, playing the role of vibration reduction, and the vibration reduction range depends on the distribution of the moment of inertia and the dynamic torsional stiffness of the coupling.

When the generator is short-circuited due to various reasons, the damping effect of the coupling is not obvious because the impact torque occurs on the side with small moment of inertia. At the same time, considering the frequency coefficient, the impact torque borne by the coupling will be very large, so it requires the coupling to have a relatively large maximum torque.

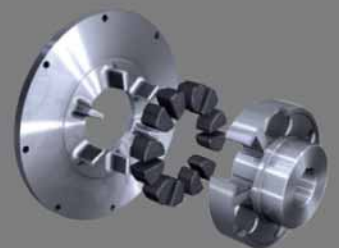
RM Series highly elastic couplings provide the perfect transmission solution for diesel generators, with natural rubber or silicone rubber elastic elements, maximum allowable temperature up to 120 ° C and maximum torque up to 40,000Nm.



However, RM series is a universal high elastic coupling with superior performance but high price. Therefore, we developed RF-D series torsional elastic coupling for diesel generators, which has higher cost performance and is an ideal choice for diesel generator transmission solutions.

RF-D Series Torsional Flexible Coupling

Designed for diesel generator, by flange, elastic body and shaft hub composition, rubber as elastic body, compression working principle, so that the equipment runs above the natural frequency of the shafting, avoid torsional resonance, and can effectively reduce vibration, alleviate impact and compensate shaft misalignment.



The RF-D series couplings range from 160 to 560, use NBR nitrile rubber as elastic elements, allow temperatures up to 90 ° C, are resistant to oil and wear, have a maximum torque of 40,000Nm and a maximum hole of 220mm, and are available for SAE flywheel or upon request.

Automation Equipment

CNC machine tools, machining centers and other mechanical processing equipment, paper making, printing, packaging production line equipment, and many other general automation equipment all need the high precision without clearance transmission, once produced, will lose positioning accuracy, if it is a processing machinery, may increase the reset tolerances, resulting in larger processing error, to achieve high precision machining, If it is a printing device, it may lead to a series of problems such as uneven paper or reprinting.

This requires a kind of non-backlash high-precision transmission coupling, and this kind of automation equipment is increasingly high speed, put forward higher requirements for us.



High precision transmission solution

For the backlash-free, the high-speed transmission to ensure accurate transmission,

For the backlash-free, the high-speed transmission to ensure accurate transmission, accurate positioning, which requires no lateral clearance of high precision coupling, this referred to as control type coupling, the coupling of many types, such as jaw coupling, metal bellows coupling, slotted coupling, disc coupling, etc., at present we only focus on curved jaws and disc type two kinds of control type coupling of research and development, Make it meet the needs of high precision transmission and servo system.

The backlash-free curved jaw coupling has good damping performance, while the disc type coupling is almost rigid, suitable for some smooth operation of the place.

Backlash-free jaw coupling GS Series

Torsional elastic coupling, from Europe, no backlash, compact structure, light weight, small moment of inertia, large transmission torque. Polyurethane elastomer, with a variety of hardness, to meet the needs of various applications.

GS series couplings have complete specifications, 14-90, the maximum torque up to 4,500Nm, the maximum opening up to 110mm, the hub has a variety of materials and types, using the dismounting type of shaft hub, can achieve the drive and load equipment without moving the replacement of elastomer.



Control Type Disc coupling C Series

A kind of disc couplings, designed for servo control systems and transmission systems requiring accurate positioning, large unit torque and unit stiffness, waist type disc, 4 and 6 holes, small axial and angular additional load.

The C-Series couplings come in a full range of specifications, ranging from 26-170, with a maximum torque of 4800Nm and a maximum opening of 90mm.



Material Handling

Some places such as mine wharf need belt conveyor, hoist and other material conveying equipment to carry out bulk transport, this conveying equipment has a large vibration and impact, continuous operation may cause driving equipment and driven equipment damage and even downtime, seriously affect the normal production operations. Therefore, we should consider the choice of a suitable coupling to mitigate the impact and reduce vibration.

For mining, wharf, building materials and other industries, the working environment is relatively bad, such as heat and humidity, dust, etc., these are the problems we must consider when choosing the coupling.

Coal production, processing and transportation, the most important thing is safe and reliable, a point of failure leads to downtime, its loss is inestimable, however, reliability, only time can witness.



Safe and reliable transmission provides guarantee for material conveying

H series snake-like spring coupling is in mine, wharf, construction industry, such as the working environment more evil slightly most widely used a coupling, torque, buffer damping performance is superior, avoids the leakage type elastomer coupling easy to wear faults, but also avoid the defect of the pu is not suitable for hot and humid environment, only in the coal industry, At present, thousands of shafts have been used in various mines, coal washing plants and coal wharves, and a large number of shafts have been used for more than 15 years.

The matching backstop has also been widely used in coal mining and other industries. The whole series has passed the coal safety certification, and the largest usage specification is up to NJZ1300.

Grid Coupling H Series

H series torsional flexible couplings use metal springs as elastic elements to transfer torque, alleviate impact and reduce vibration, vibration reduction amplitude of more than 30%, and provide good axial, angular and radial compensation. The design of trapezoidal spring section and curvilinear teeth makes the stress distribution of the coupling more reasonable under the action of torque, and provides more compensation.

H series couplings adopt radial split-type housing. It is convenient to install, disassemble and replace the spring. The spring can be replaced without moving the driving and driven equipment.

H series couplings complete specifications, 1020H-1260h, the maximum torque up to 1,000,000Nm, the maximum hole up to 580mm, carbon steel hub, according to the need can be configured with expansion sleeve to make the installation more convenient, can also be equipped with brake disc and brake drum and other functional components, suitable for belt conveyor, hoist, converter, etc.



Backstop NJZ Series

NJZ series contact wedge type backstop, light weight, compact structure, reliable transmission, easy release and easy installation characteristics.

NJZ series backstop with complete specifications, NJZ16-1700, maximum torque of 1,700,000Nm, maximum opening of 620mm, through MA certification, suitable for belt conveyor and other lifting transport equipment.



Elastomeric Couplings

This is a kind of coupling through nonmetallic elastic components to transfer torque and alleviate impact and reduce vibration, usually using polyurethane or rubber as elastic components, choose different materials and hardness, can meet the needs of different torsional stiffness and damping.

CJ, L and S-Flex elastomer couplings can replace elastic pin, H-block, tire and other couplings. Customers can make a reasonable choice according to different equipment. For more information, please consult RUVJAX Transmission.

JIS Shear Jaw Coupling

Torsional flexible coupling, from the United States, using L series straight claw coupling hub, polyurethane elastomer, can be replaced in the case of not moving the drive and driven equipment.

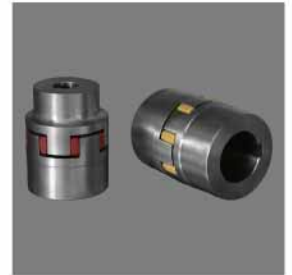
Full range of JIS couplings, LS090-CS285, maximum torque up to 3600Nm, maximum bore size 102mm, suitable for quick maintenance.



Curved Jaw Coupling CJ Series

CJ series torsional elastic coupling, from Europe, compact structure, light weight, small moment of inertia, large transmission torque, has the characteristics of failure safety. Polyurethane elastomer, with a variety of hardness, to meet the needs of various applications.

CJ series couplings complete specifications, 14-180, the maximum torque up to 35,000Nm, the maximum opening up to 200mm, the shaft hub has a variety of materials and types, using radial discharge type hub, or flange hub, can achieve the drive and drive equipment replacement of elastic body. Suitable for stable and unstable operation of all kinds of equipment, such as pump, fan, compressor, reducer and other general equipment.



Straight Jaw Coupling L Series

L series torsional elastic coupling, from the United States, compact structure, light weight, small moment of inertia. Rubber, polyurethane or copper are used as elastomers to meet the needs of various applications.

L series couplings have complete specifications, 035-4567, maximum torque 19,200Nm, maximum opening up to 178mm, the standard hub is powder metallurgy iron and cast iron, aluminum alloy and stainless steel hub can also be provided upon request. The winding elastomer can be replaced without moving the drive and the driven device. Suitable for stable and unstable operation of all kinds of equipment, such as pump, fan, compressor, reducer and other general equipment.



Tooth Ring Coupling S-FLEX Series

S-flex series torsional elastic coupling, from the United States, with superior damping, cushioning and compensation ability, adopts rubber or polyurethane as elastomer, with integral and split structure, to meet different needs and installation requirements.

The S-Flex series couplings come in a full range of sizes, 3-16, with a maximum torque of 8189Nm and a maximum hole of 152mm. The standard hub is cast iron. The intermediate segment type can be used to replace the elastomer without moving the driving and loading equipment. Suitable for unsteady operation of shock/vibration equipment, such as pumps, compressors, fans, mixers, etc.



Disc Couplings

A metal coupling, torsional rigidity, using stainless steel sheet to transfer torque, and realize axial, angular and radial compensation, widely used in fluid equipment, automation equipment, shipbuilding and other industries,

Design Features:

- Bundle type disc
- Infinite life design
- Zero maintenance, no lubrication
- Backlash-free
- Low additional load
- Overload protection

The axial force, angular bending moment will occur due to the shaft misalignment for the disc coupling. The driving equipment and driven equipment parts will be damaged caused by the too much axial force, radial bending moment. The customer shall pay highly attention to and exactly evaluate the axial, angular and radial misalignment.

High performance disc coupling H Series

Designed for high reliability application, 6 -, 8 - or 10-bore, stop construction, in compliance with API671(ISO10441) standards.

H Series couplings in a full range of specifications, 140-535, with a maximum torque to 580,000Nm and a maximum bore of 430mm.



General Disc Coupling G Series

G series is designed for general purpose equipment, 4 hole, 6 hole, 8 hole or 10 hole, a variety of structural types, dynamic balance grade reaches G6.3. A variety of structure types, dynamic balance grade and G6.3.

G Series couplings come in a full range of specifications, ranging from 80 to 1.320, with a maximum torque of 6,400,000Nm.



Economical Disc Coupling GL Series

The GL series is designed for use in industrial process pumps or similar equipment, 4 holes, maximum speed 4000rpm, dynamic balance class and G6.3.

GL series couplings have complete specifications, ranging from 78-196, with a maximum torque of 2000Nm and a maximum bore size 90mm.



Disc Coupling T Series

T series is designed for places requiring higher speed, 6 holes, 8 holes or 10 holes, to meet the API610(ISO13709) or/and ISO14691 standards, dynamic balance grade up to G2.5, can also meet the API671(or ISO10441) standards as required.

T Series disc couplings are available in a full range of specifications, ranging from 86 to 834, with a maximum torque of 468,000Nm and a maximum opening of 580mm.



Maximum Displacement Value

Maximum angular displacement and maximum axial displacement are very important parameters of disc coupling. The maximum axial displacement varies according to specifications. The maximum angular displacement of each type of disc coupling is as follows:

Series	4Bore	6Bore	8Bore	10Bore
GL	1.0	-	-	-
G	1.0	1.0	0.67	0.50
T	1.0	0.67	0.5	0.375
H	-	0.375	0.25	0.167
C	1.0	1.0	-	-

Note: The max axial displacement and the maximum angular displacement of disc coupling do not occur at the same time. Please strictly comply with the provisions in the sample data of each series of products.

Torsional Couplings

This is a kind of coupling that adjusts the shaft natural frequency through torsional rigidity. Usually rubber or engineering plastics are elastomer. Through different structural types, various torsional rigidity can be achieved. Torsional coupling can be divided into torsional rigidity, torsional elasticity and torsional high elasticity according to the stiffness. But in practice, in order to meet the needs of various equipment and working conditions, torsional rigidity will be divided into more series. At the same time, there are dual stiffness torsional coupling to meet the different working conditions of small torque and large torque.

Torsional vibration calculation must be carried out in the selection of this kind of coupling. Only correct selection can ensure the normal operation of your equipment and coupling and ensure the service life. Otherwise, the equipment and coupling may be damaged.

Highly Flexible Couplings RF-RSeries

Designed for heavy duty equipment, high flexibility at low torque and increased stiffness with increasing torque. The compression type is composed of shell, inner cylinder, elastomer and shaft hub.

The RF-R series couplings are in all size, 94-520, with maximum torque up to 15,000 nm and maximum bore up to 130mm.

Currently in the development stage, if you need to order, the delivery cycle will be long, please consult RUVJAX for more details.



Torsional Flexible Couplings RVSeries

RV series couplings are designed for diesel driven equipment, such as pumps connected by cardan shafts, agricultural machinery, non-road machinery equipment, etc. The RV series for torsional high-elastic couplings allows the diesel engine to drive a load of large moment of inertia, avoiding damage caused by torsional resonance.

RV series couplings complete RV800 to RV1600, maximum torque up to 1680Nm, suitable for SAE flywheel or as required.



Highly Flexible Couplings RX-VSeries

RX-V series highly flexible couplings are designed for use in diesel engine drives where cardan shafts are used to connect the driven devices, which cannot be flanged to the diesel engine. RX-V series highly flexible couplings avoid shaft torsional resonance.

RX-V series couplings from RX-V12 to RX-V80 with maximum torque up to 40,000Nm, suitable for SAE flywheel or as required.



Torsional Flexible Couplings RXSeries

Applied for diesel engine driven pump, compressor, fan, generator and other equipment, end shear type, made of flange, elastomer, shaft hub, rubber as elastomer, so that the equipment in the natural frequency of shafting operation, avoid torsional resonance.

RX couplings range from RX12 to RX80, with maximum torque up to 40,000Nm, suitable for SAE flywheel or as required.



RUVJAX[®]
乐兆传动

**Shanghai RUVJAX Power Transmis-
sion Technology Co.,Ltd**
Address: No 221, Jinlan Road, Jiading
Industrial Park, Shanghai, China
Tel: 0086 21-5954-6855
Website: www.ruvjax.com